

COMPULSORY PILOTAGE

The compulsory pilotage areas in Japan are broadly divided into two categories; i.e., the compulsory areas in ports and those in waters including channels, straits and adjacent port(s).

	AREA	VESSEL
Port Areas Category A	<ul style="list-style-type: none"> • Yokosuka • Sasebo • Naha 	(*) <ul style="list-style-type: none"> • Vessels of foreign registry with gross tonnage 300 tons or more, • Vessels of Japanese registry with gross tonnage 300 tons or above engaged in international voyages or • Vessels of Japanese registry with gross tonnage 1,000 tons or above engaged in domestic service.
	<ul style="list-style-type: none"> • At Kawasaki 	<ul style="list-style-type: none"> • Vessels with gross tonnage 3,000 tons or above. • Vessels carrying dangerous goods are the same as (*).
	<ul style="list-style-type: none"> • Kanmon (Berthing/Unberthing vessels) 	<ul style="list-style-type: none"> • Vessels with gross tonnage 3,000 tons. Vessels loaded with goods dangerous and Vessels entering/leaving sections 1 - 4 of Wakamatsu are the same as (*).

Waters Category B	<ul style="list-style-type: none"> • Tokyo Bay (including Ports of Tokyo, Chiba and Kisarazu) • Ise-Mikawa Bay (including Ports of Nagoya, Yokkaichi, Kinuura and Mikawa) • Osaka Bay (including Ports of Kobe, Osaka, Hannan and Akashi Strait) • Bisanseto (including Port of Mizushima) • Kurushima Strait • Kanmon Channel (Passing vessels) 	<ul style="list-style-type: none"> • Vessels with gross tonnage 10,000 tons or above.
-------------------------	--	--

PILOTAGE CERTIFICATE

Certification

Shipmasters who wish to navigate in compulsory pilotage area without pilot shall have pilotage certificate.

Pilotage certificates for the fore-mentioned compulsory pilotage areas are given to masters meeting the following requirements:

- Masters serving in vessels of Japanese registry or vessels flying flags other than Japanese flags but chartered (time-chartered vessels to be excluded) by a person or persons who are entitled to own Japanese flag vessels.
- Masters recognized by competent District Transport Bureau to have been engaged in navigation in the

pilotage district in question, aboard vessel to which the *gross tonnage restrictions (See below) within such particular compulsory pilotage area apply, 4 times or more.

[Note] Example of Tonnage restrictions.

Masters wishing to have certificate available for:

- vessel up to 20,000 GRT shall have experience aboard vessel less than 10,000 GRT.
- vessel more than 20,000 GRT shall have experience aboard vessel more than 20,000 GRT.

COMPULSORY PILOTAGE AREAS

- TOKYO BAY
- ISE MIKAWA BAY
- OSAKA BAY
- SETO INLAND SEA
- KANMON CHANNEL
- SASEBO*(See Fig.2 District No.30)
- NAHA*(See Fig.2 District No.35)



Compulsory for vessels over 300,000 GRT
(See Category A)



Compulsory for vessels over 3,000 GRT
(See Category A')



Compulsory for vessels over 10,000 GRT
(See Category B)

[Note] *Areas are omitted.

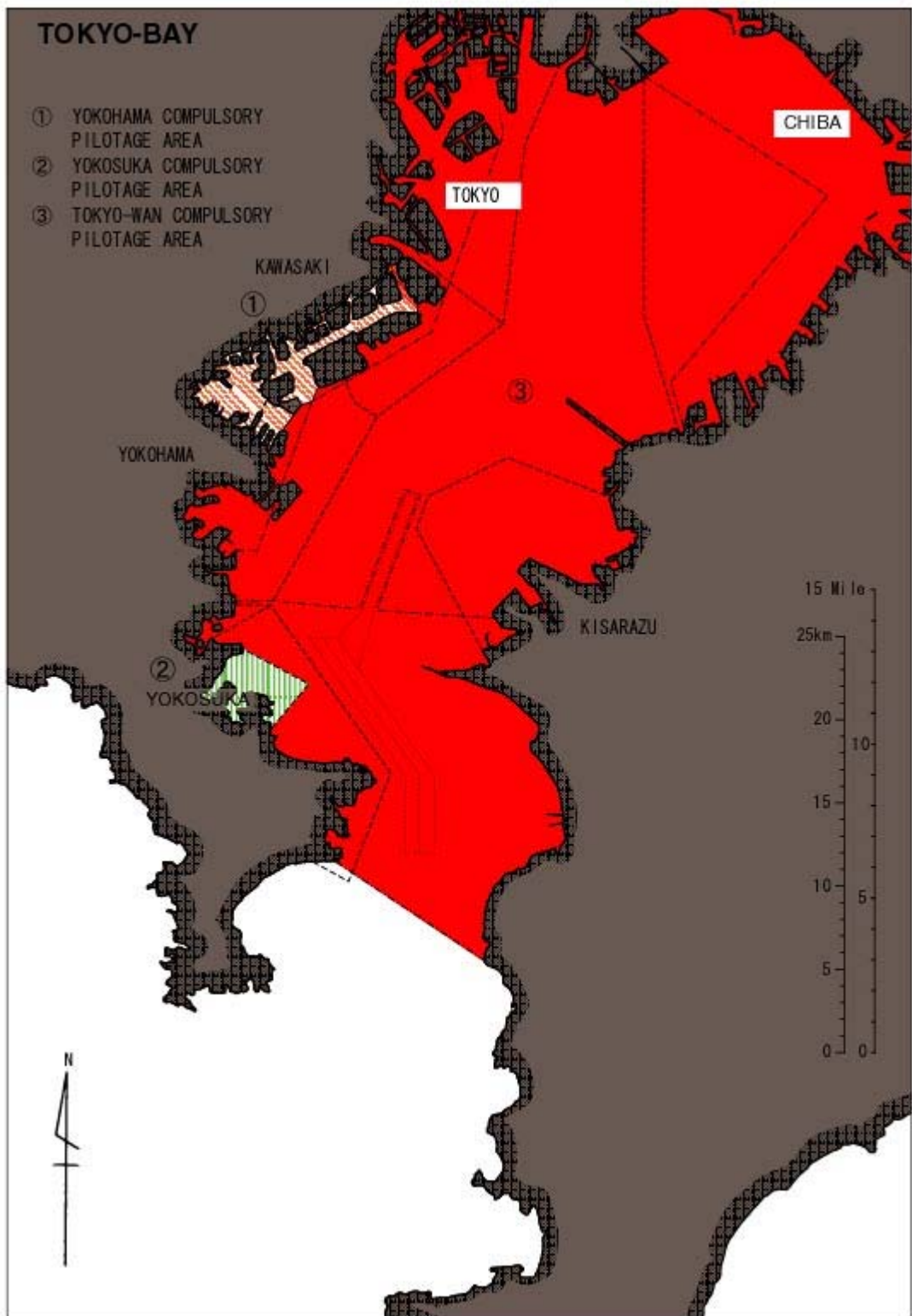


Fig.4-1

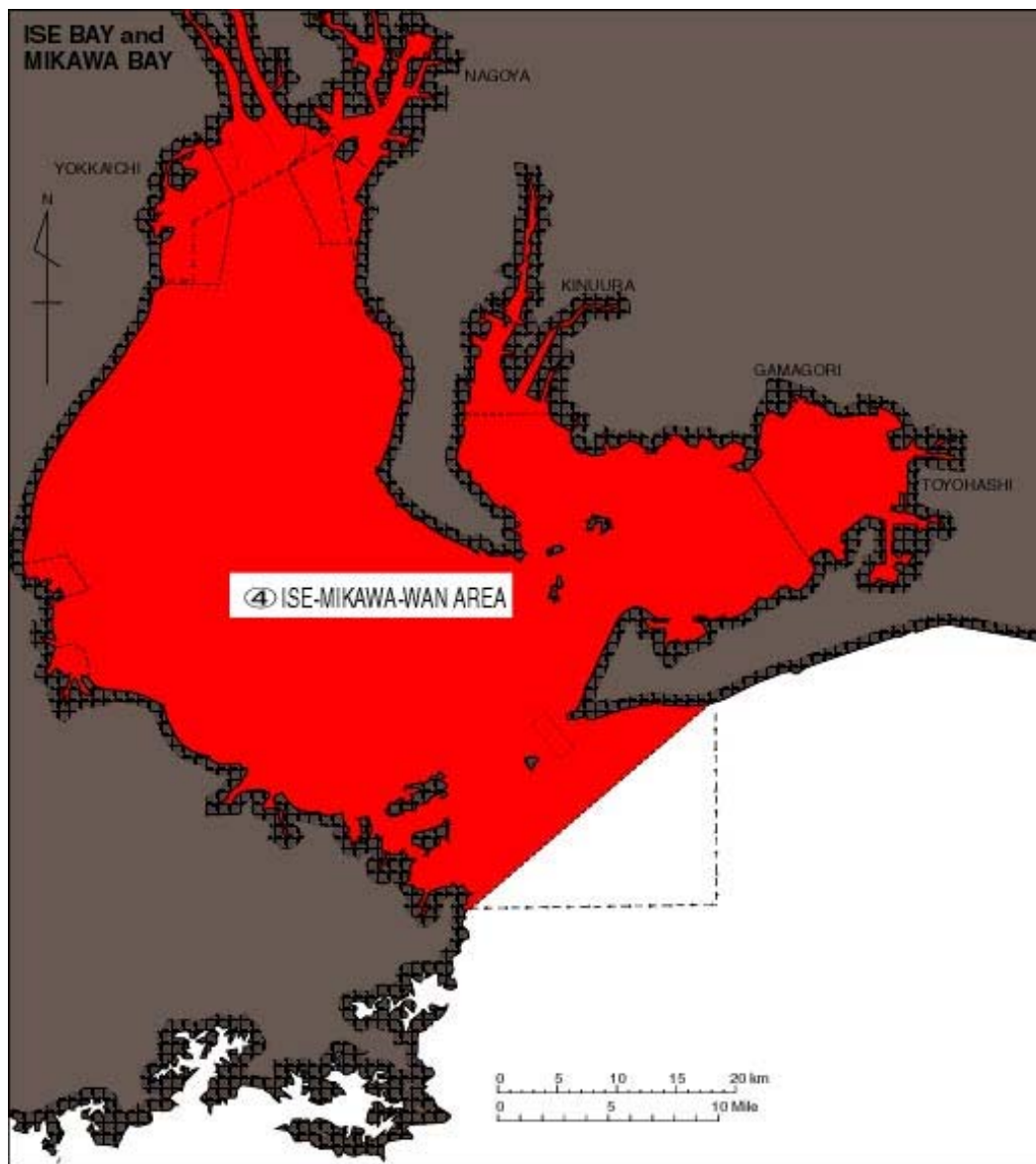


Fig.4-2

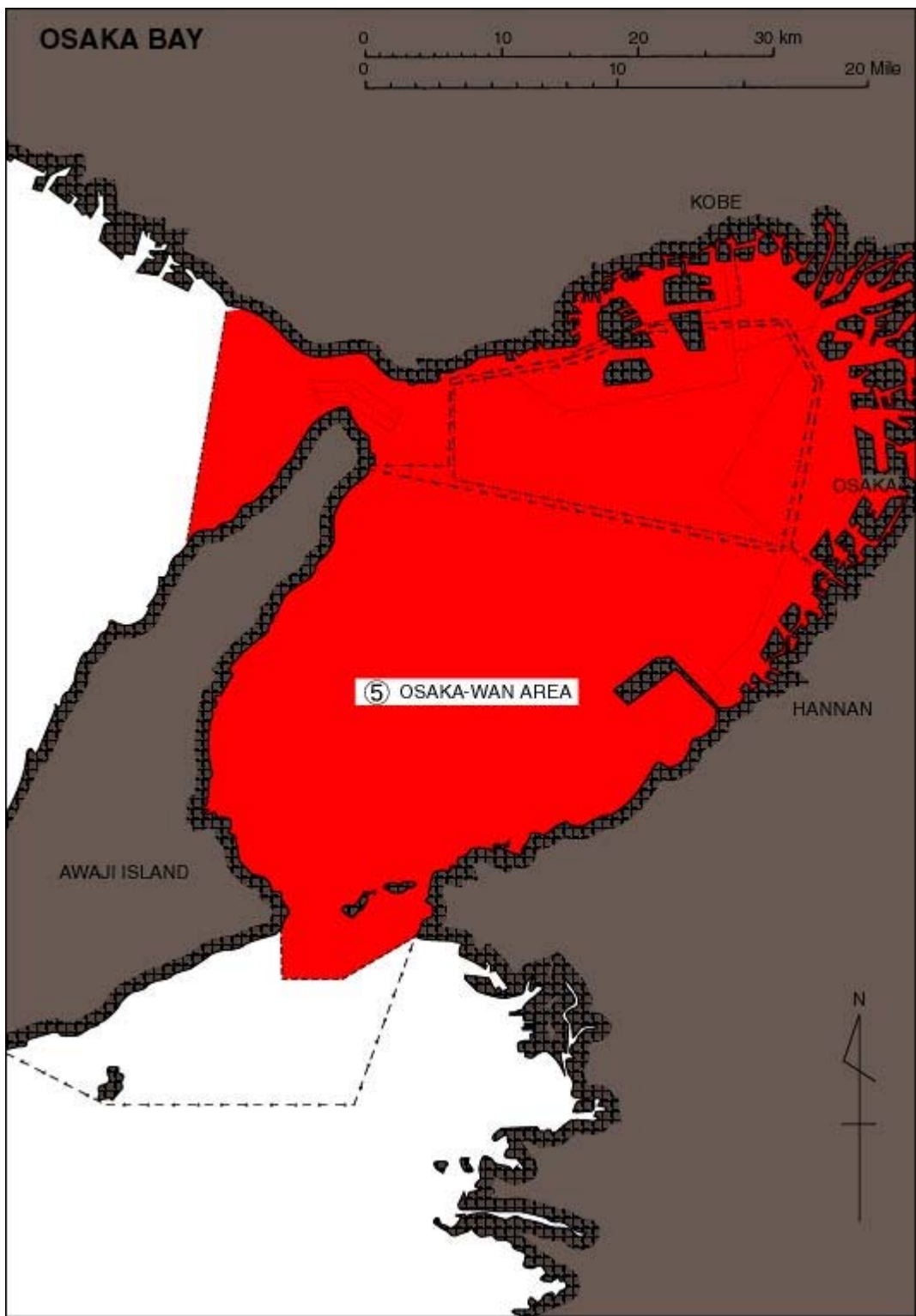


Fig.4-3

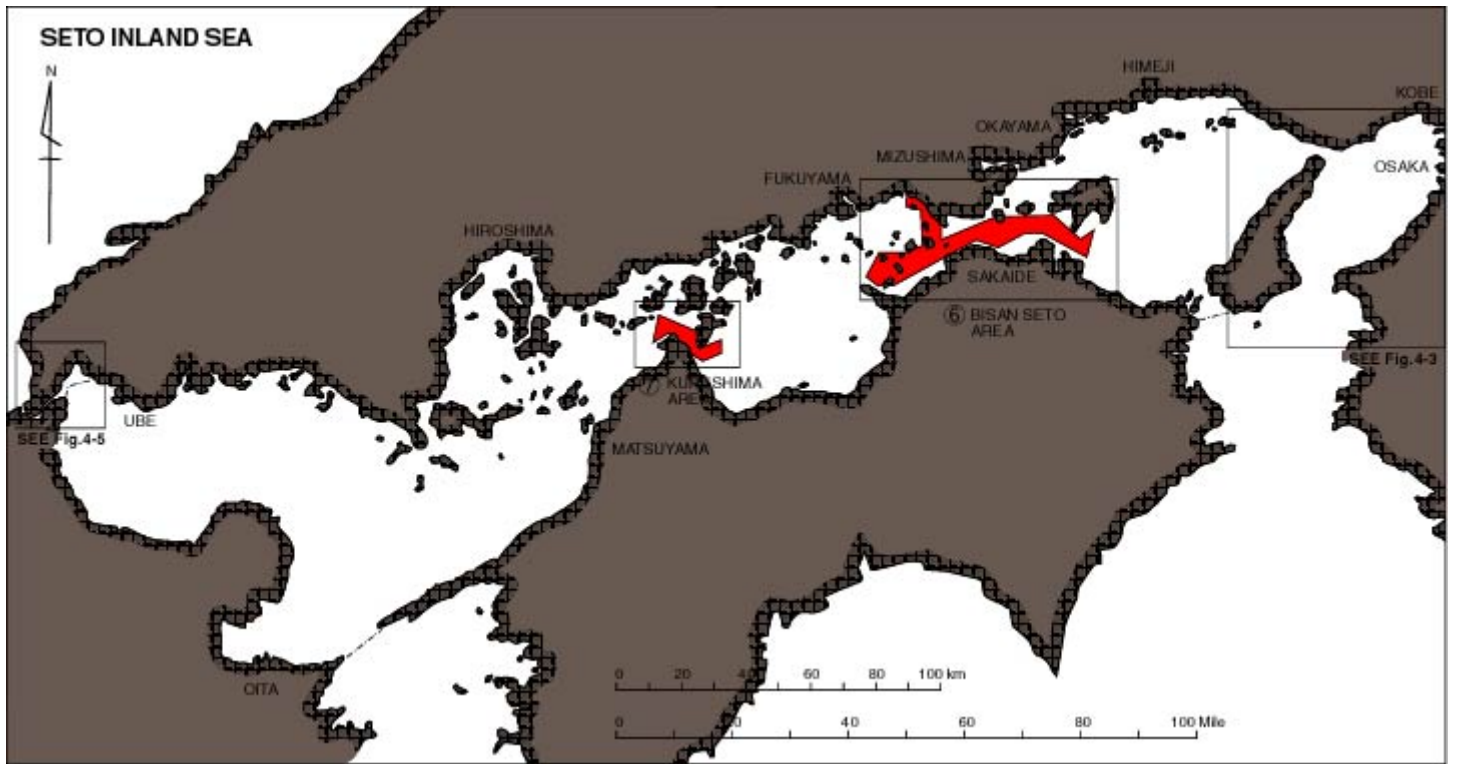


Fig.4-4

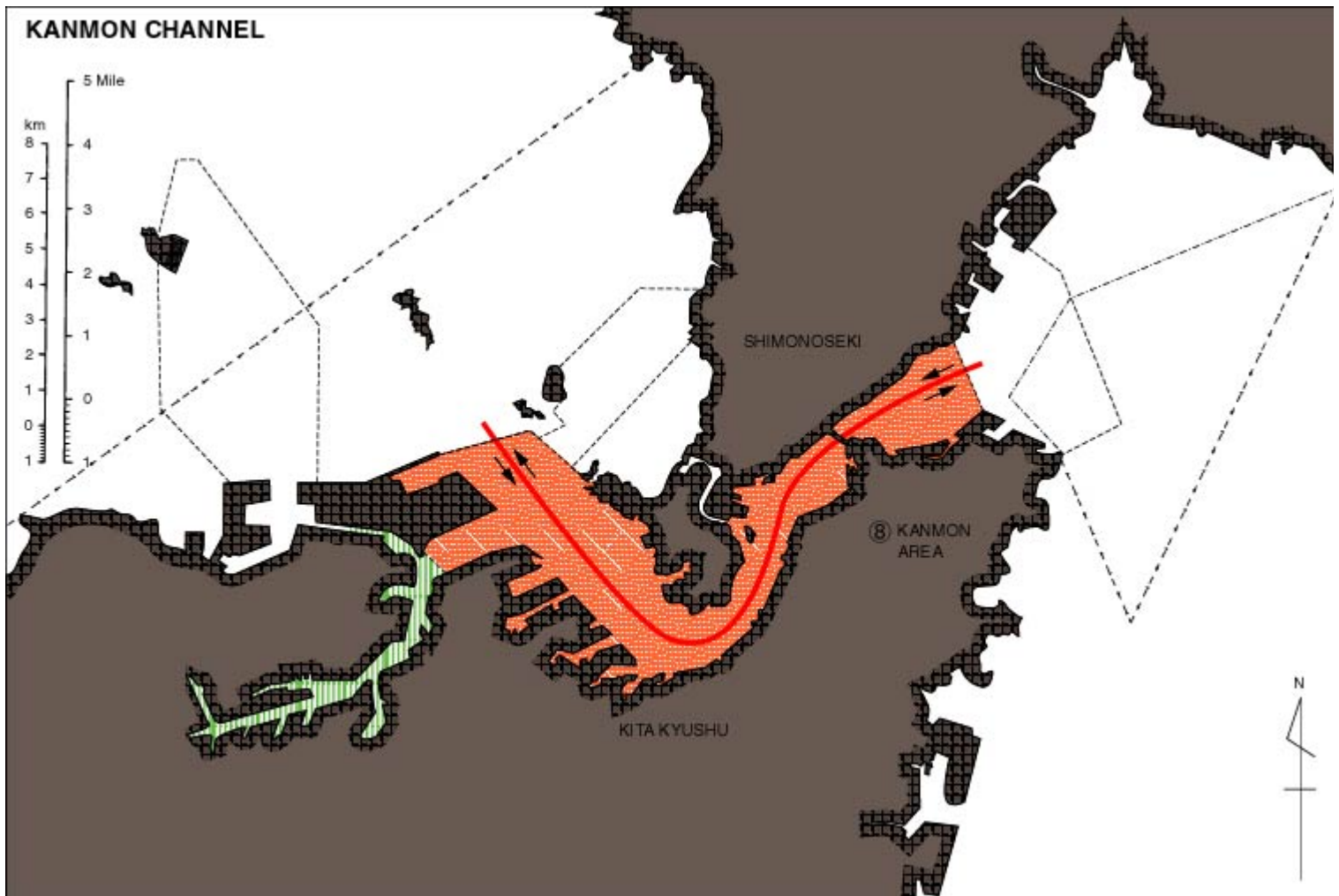


Fig.4-5